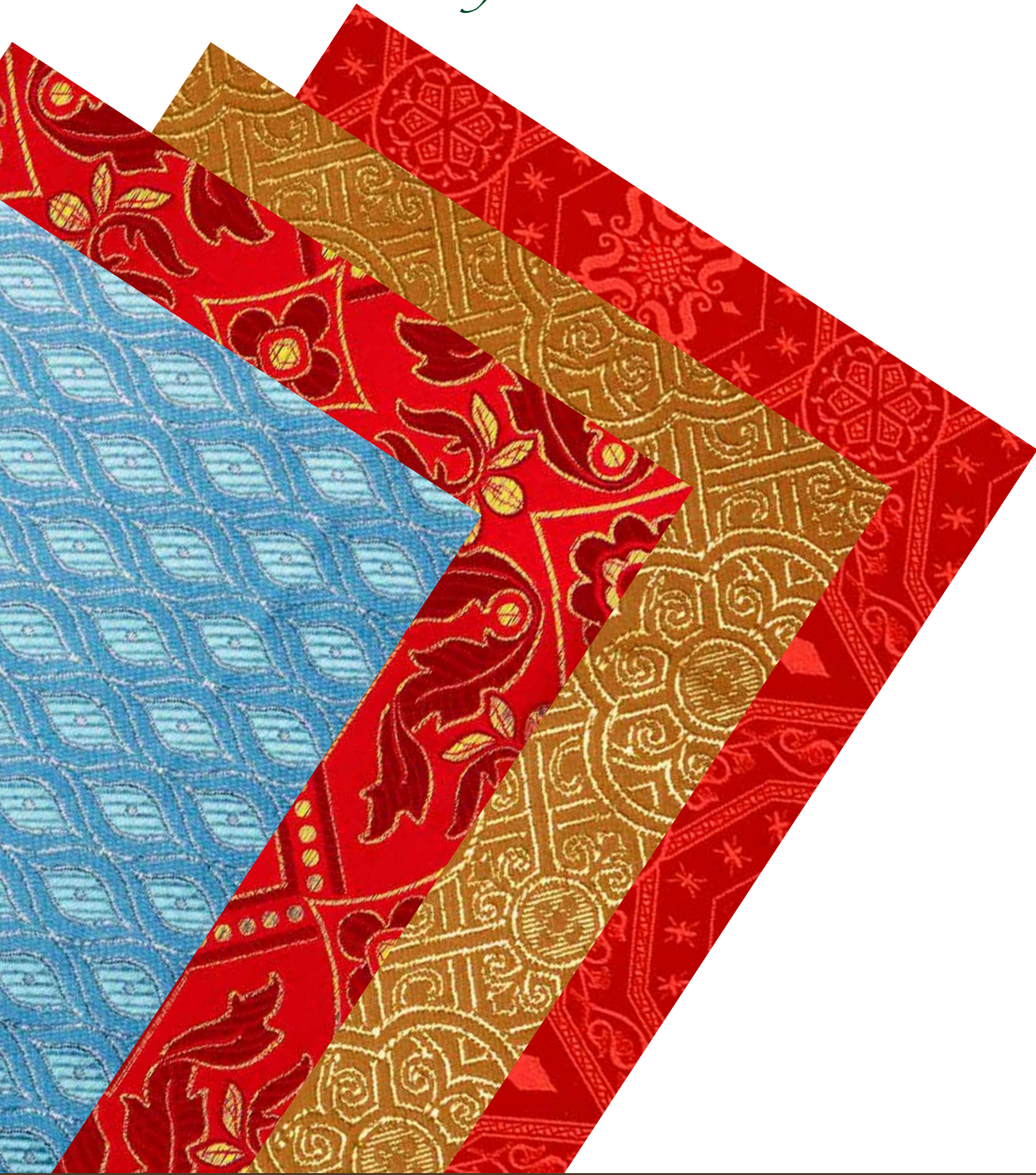


*felisi*<sup>1911</sup>

---



TESSUTI ECCLESIASTICI

**40 002 27.16**  
Lampasso cardo lurex  
PL 65% AC 35%



0260



0096



0317



0424

**40 101 27.16**  
Lampasso bizantino - lurex  
PL 65% AC 35%



0096



0123



0280



0307



0317



0423



0424



1002

**40 129 20.16**  
Lampasso floreale con croce  
AC 30% VI 35% PL 35%



1102

**40 136 27.16**  
Lampasso 'Giardino Anfora' oro  
PL 66% AC 34%



1151

**40 129 27.16**  
Lampasso floreale con croce lurex  
PL 66% AC 34%



1042

**40 152 27.16**  
Lampasso bizantino geometrico  
PL 65% AC 35%



0096



0260



0424



0317

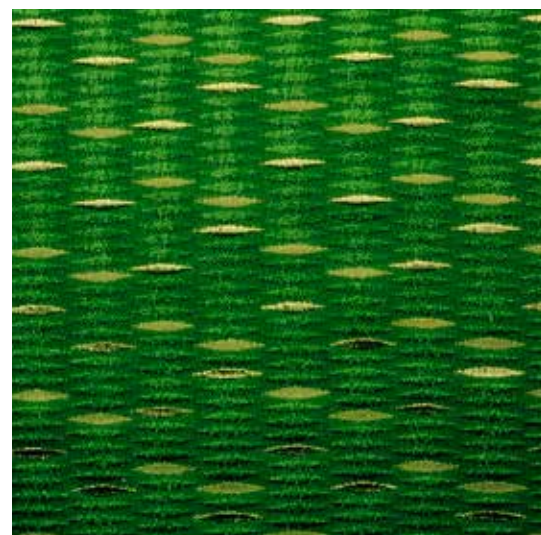


0367

**40 025 70.16**  
Lampassetto gocce  
AC 80% PL 20%



0096



0230



0242



0317



0425



1002

**40 026 60.16**  
Lampassetto disegno pavone lurex argento  
AC 80% PL 20%

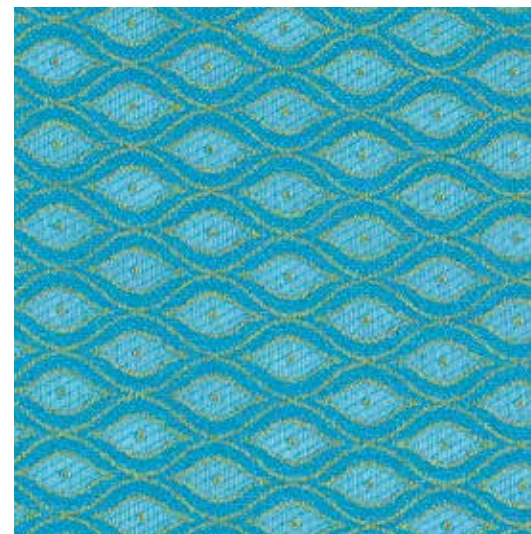


0123

**40 026 70.16**  
Lampassetto disegno pavone  
AC 80% PL 20%



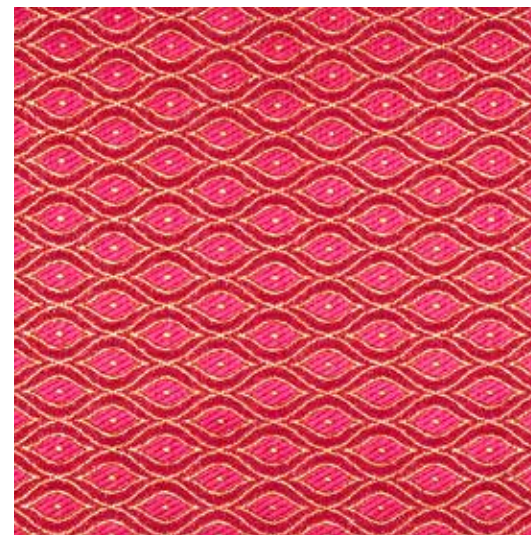
0096



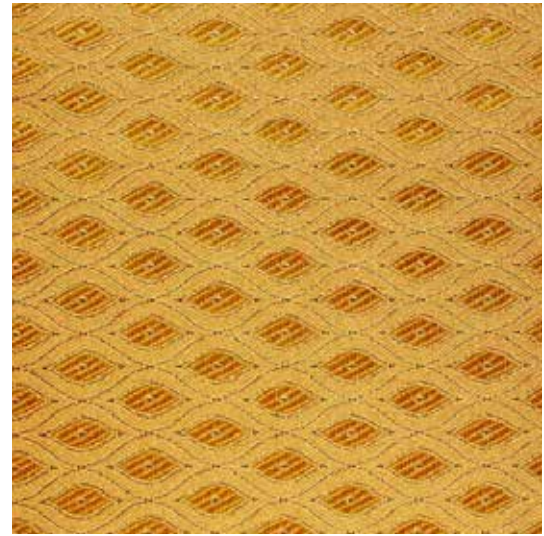
0123



0230



0242

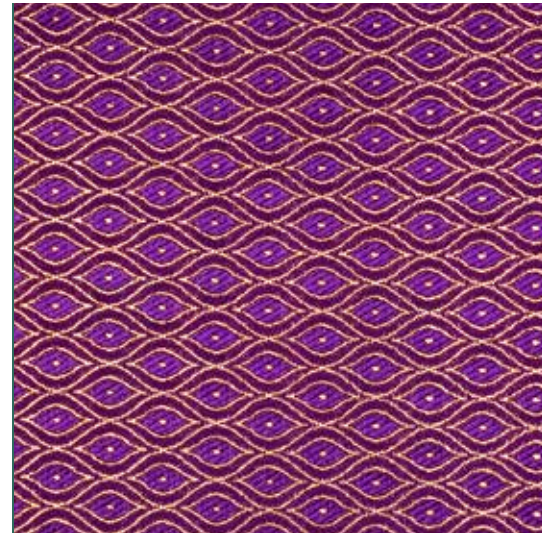


0260

40 030 70.16  
Lampassetto 'Margherita'  
AC 80% PL 20%



0096



0317



0230



0425

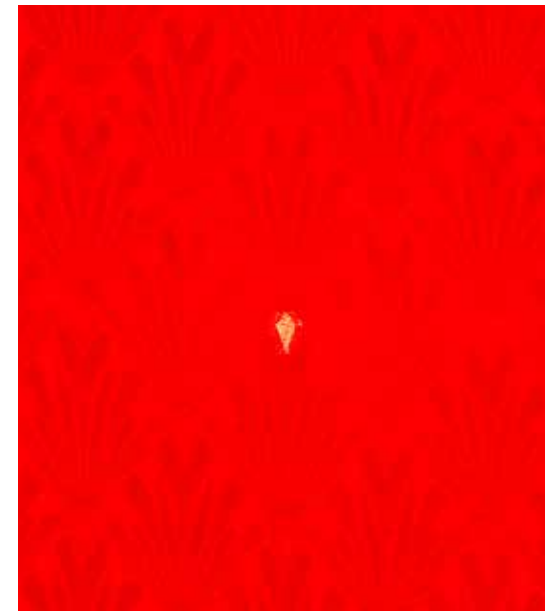


0230



0317

40 035 74.16  
Lampassetto misto seta palme  
AC 55% SE 43% PL 2%



0096



0317



0230



1002



0317



0401



1103



1009

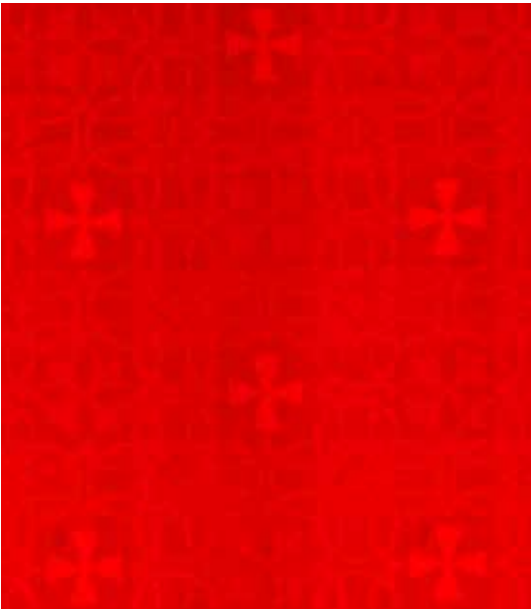


1129

**40 036 84.16**  
Lampassetto misto seta perdonò  
AC 55% SE 45%

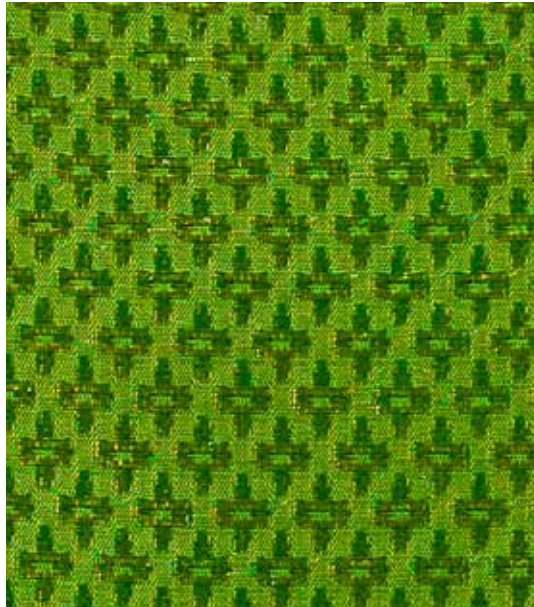


1051

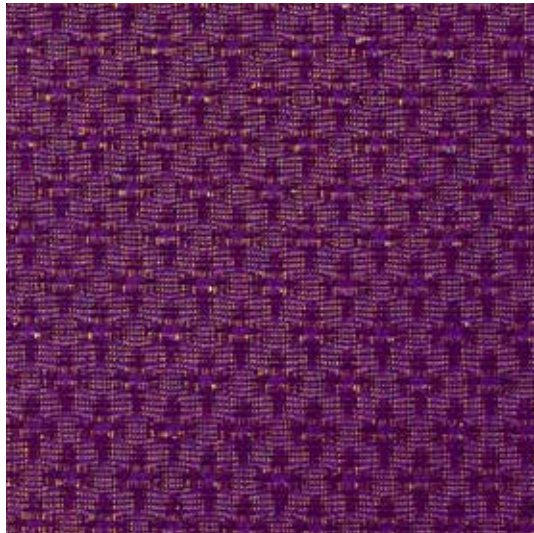


0401

**40 039 70.16**  
Lampassetto piccole croci  
AC 80% PL 20%



0230

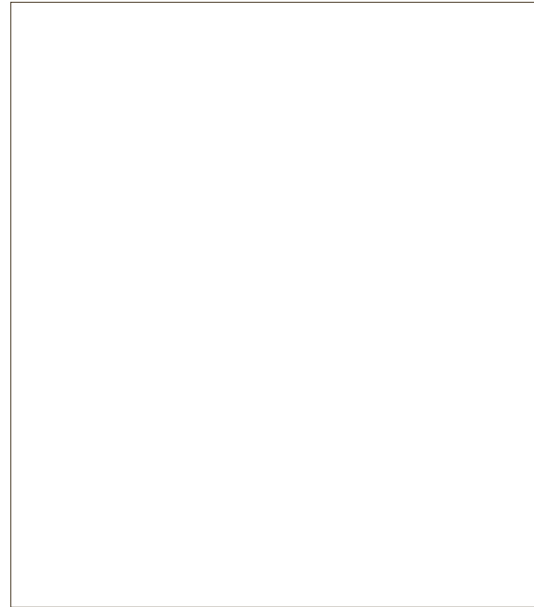


0317

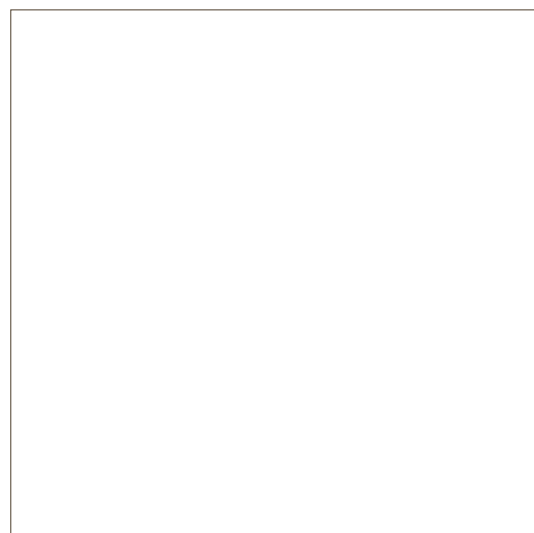


0425

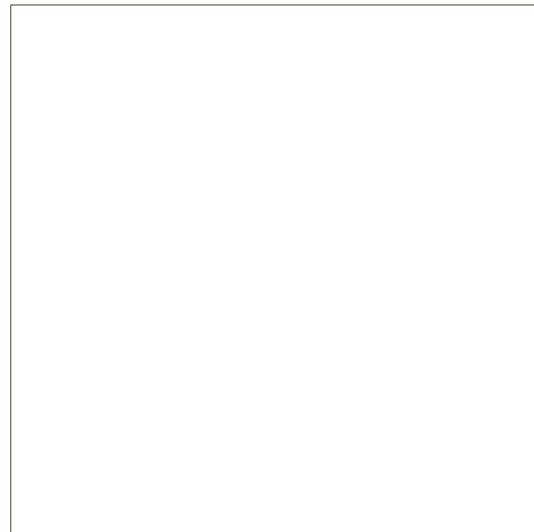
**40 220 89.16**  
Lampassetto misto lana croce angolare  
WO 56% AC 44%



0230

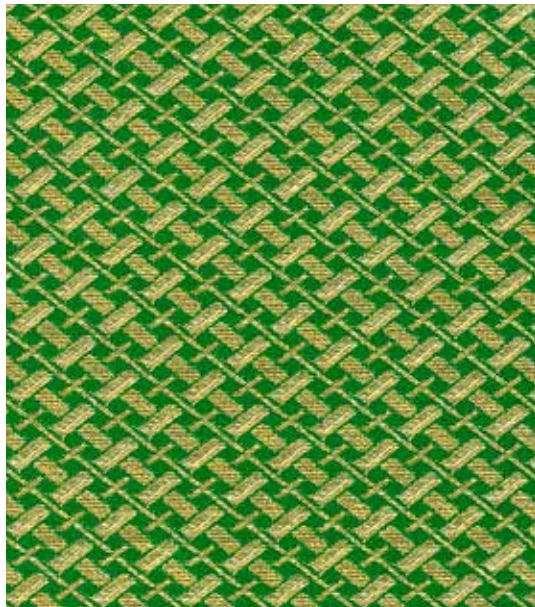


0317



0425

**40 410 70.16**  
Broderie paglia intrecciata  
AC 75% PL 25%

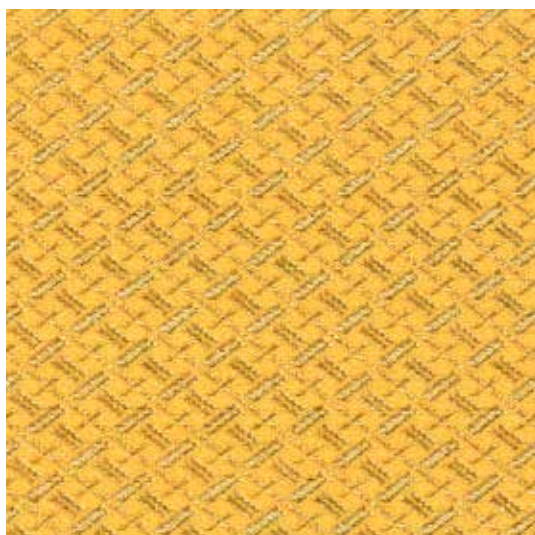


0230



0425

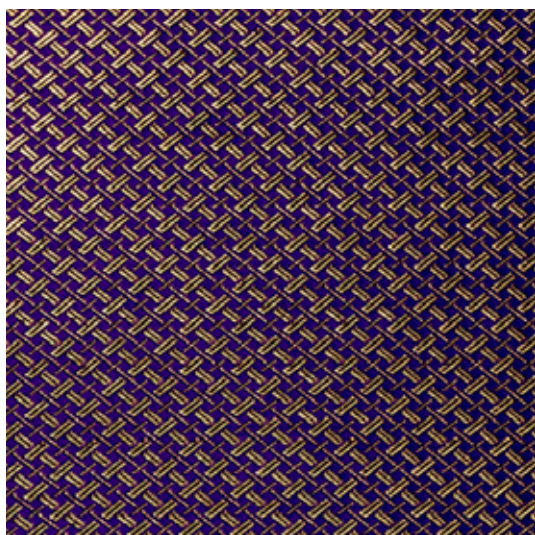
**40 422 70.16**  
Broderie crocette  
AC 75% PL 25%



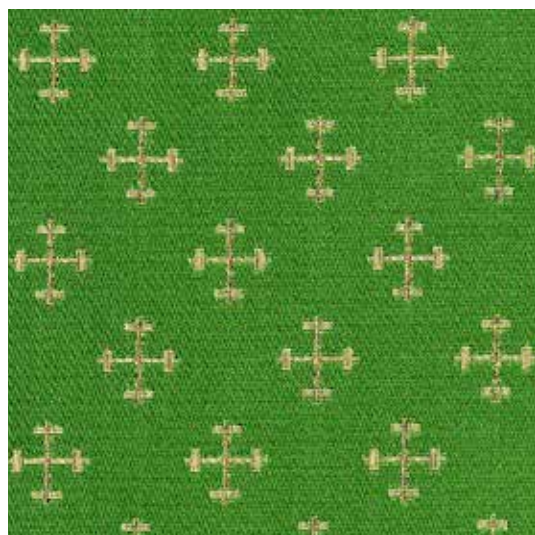
0260



0096



0317



0230

0260

**40 430 70.16**  
Broderie bizantino classico  
AC 75% PL 25%



0096



0317



0230



0425



0260



0317



0096

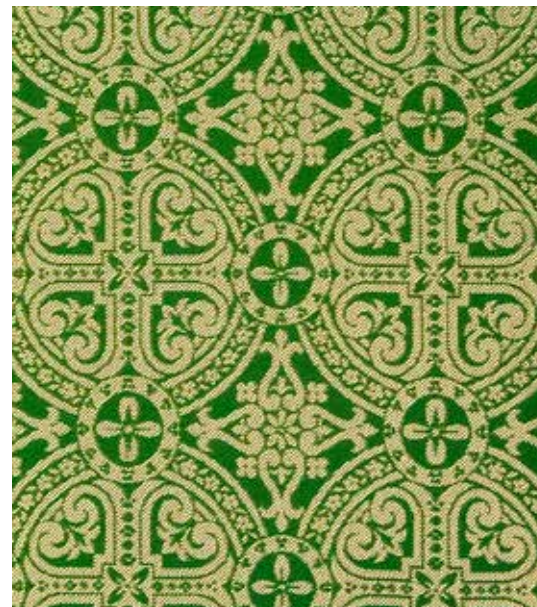


0425



0260

**40 441 70.16**  
Broderie bizantino cerchio  
AC 75% PL 25%



0230

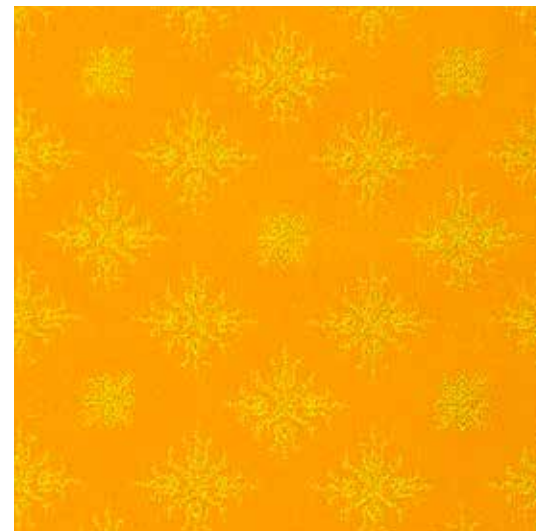


0260

**40 442 70.16**  
Broderie sole  
AC 75% PL 25%



0230



0260

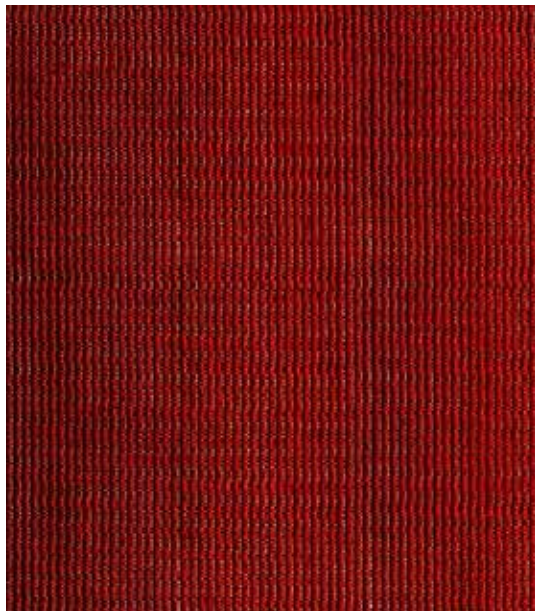


0317

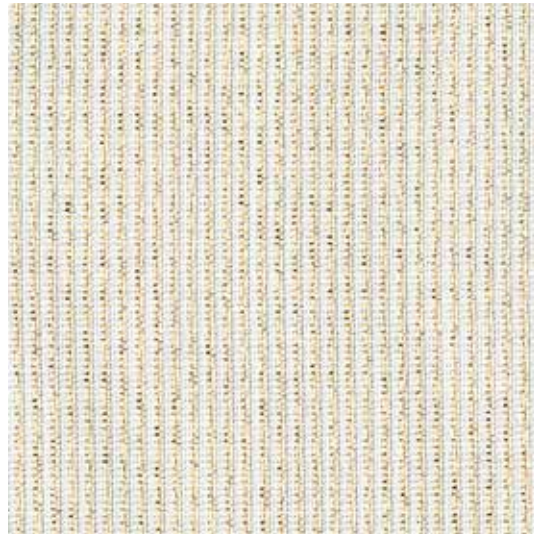


0425

**40 229 79.16**  
Faille rigato mezza lana/lurex  
AC 58% WO 32% PL 10%



0096



0401

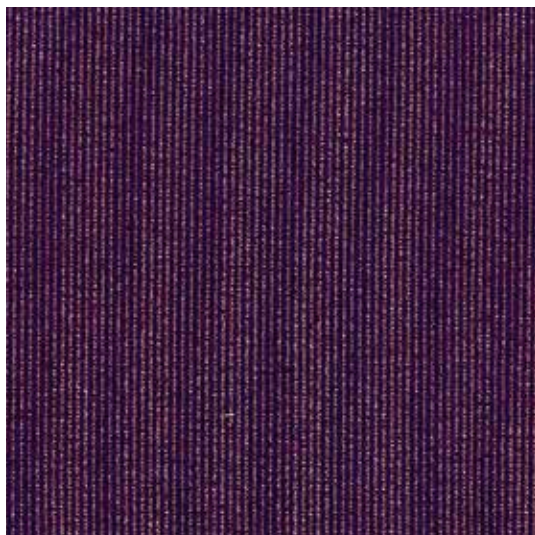
**40 243 69.16**  
Faille pioggia mezza lana/lurex argento  
WO 47% AC 45% PL 8%



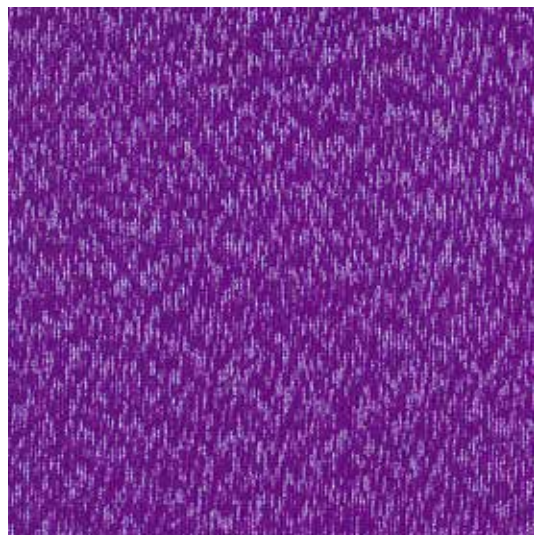
0230



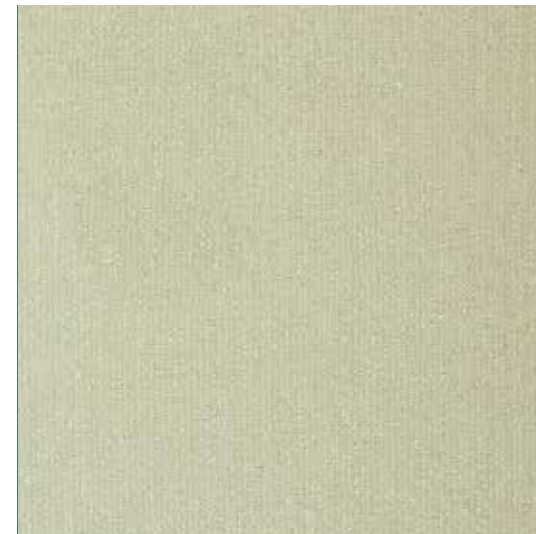
0123



0317



0317



0401

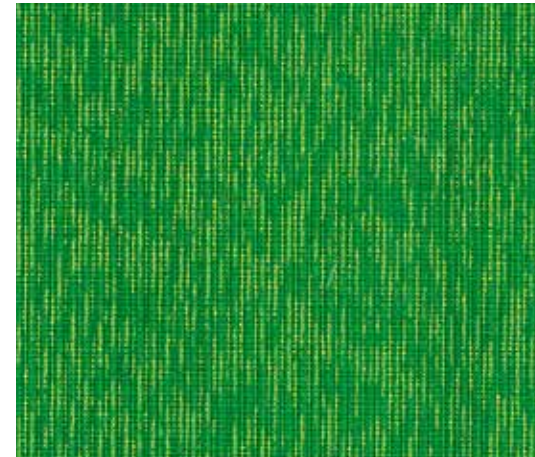
**40 243 79.16**  
Faille pioggia mezza lana/lurex oro  
WO 47% AC 45% PL 8%



0096



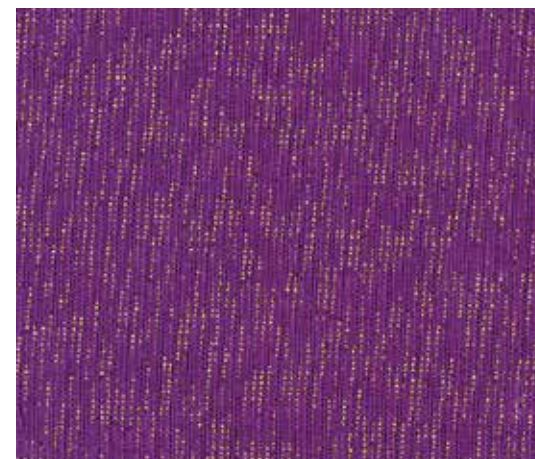
0123



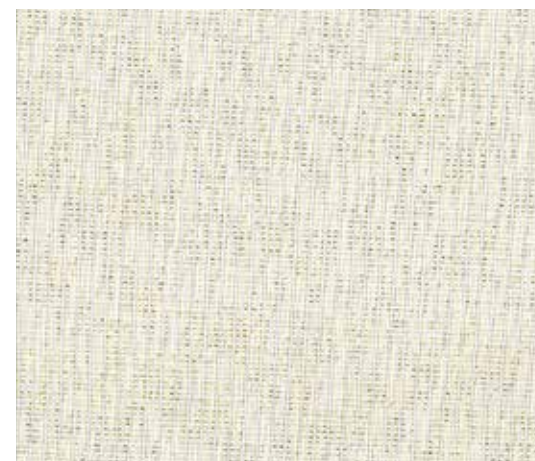
0123



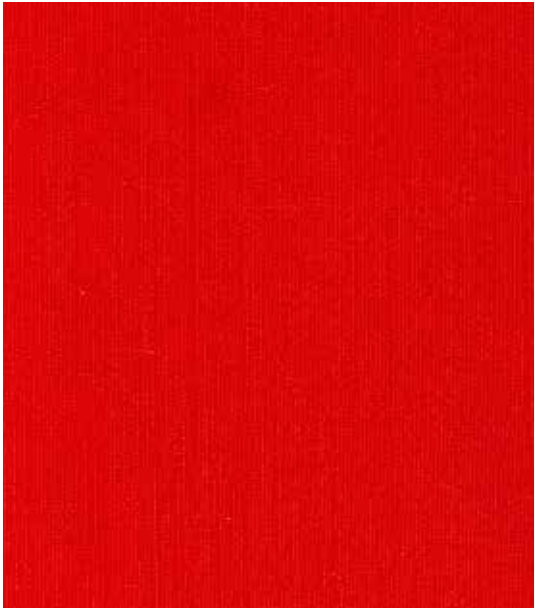
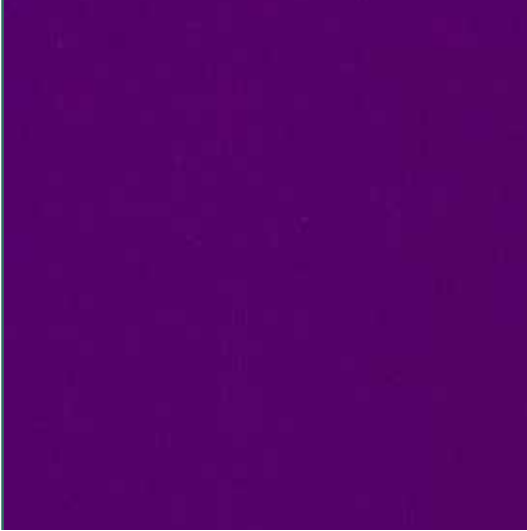
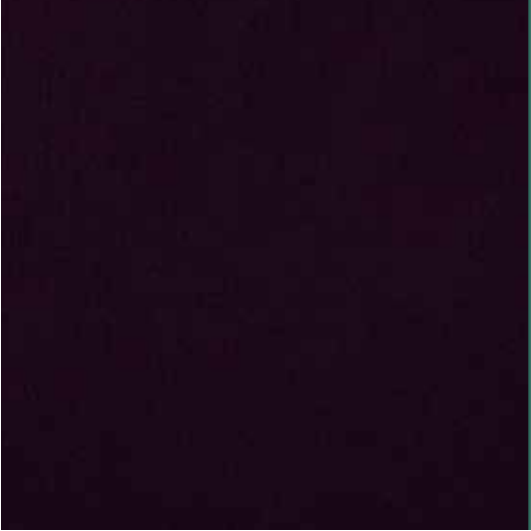
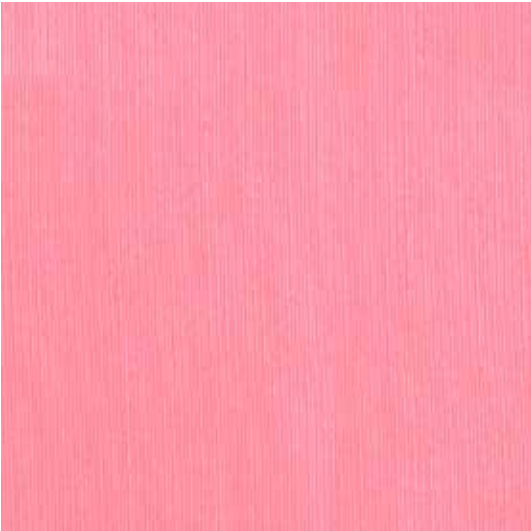
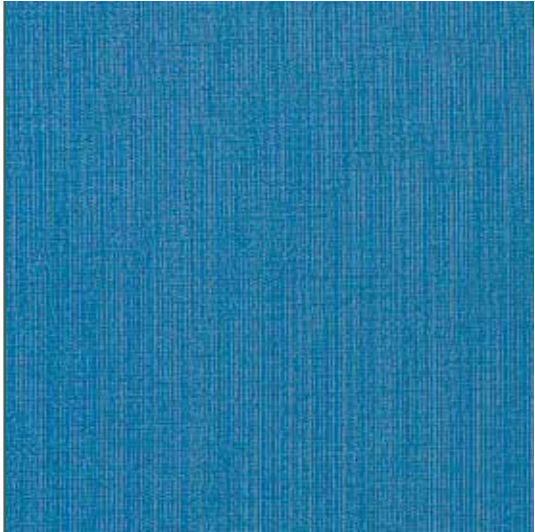
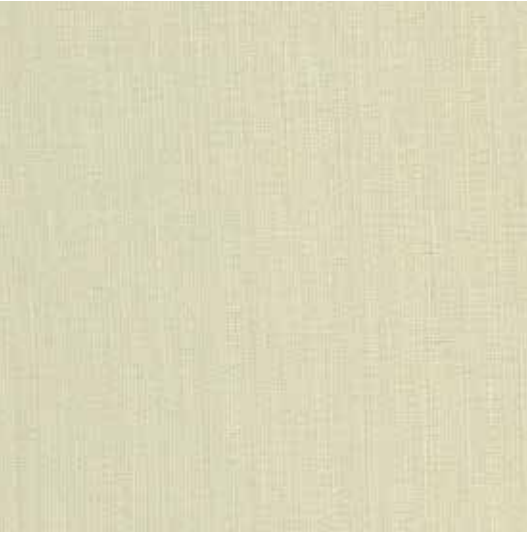

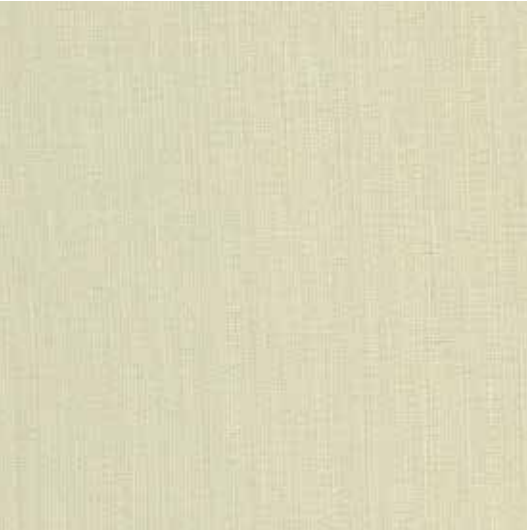
0230



0317



0401

TESSUTI ECCLESIASTICI FAILLE		felisi <sup>1911</sup>		felisi <sup>1911</sup>		TESSUTI ECCLESIASTICI FAILLE	
<div>45 001 89.16</div> <div>Faille mezzo lana</div> <div>AC 55% WO 45%</div>	<div>0096</div> 	<div>0317</div> 	<div>0423</div> 	<div>0848</div> 			
	<div>0123</div> 	<div>0401</div> 					
	<div>0230</div> 	<div>0401</div> 					

**40 251 86.16**  
Tessuto Papale argento e azzurro  
PL 100%



0123



0260

**40 251 87.16**  
Tessuto Papale  
PL 100%



0123

**40 251 87.16**  
Tessuto Papale  
AC 70% PL 30%



0096



0230



1002



0317



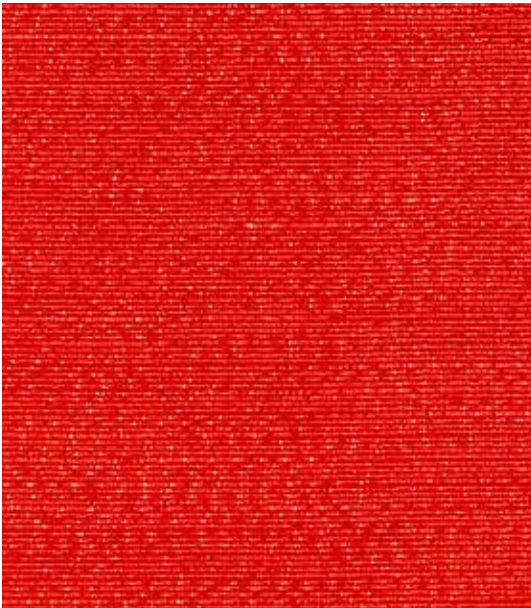
0425

**40 252 87.16**  
Tessuto Papale mezza lana  
PL 75% WO 25%



0260

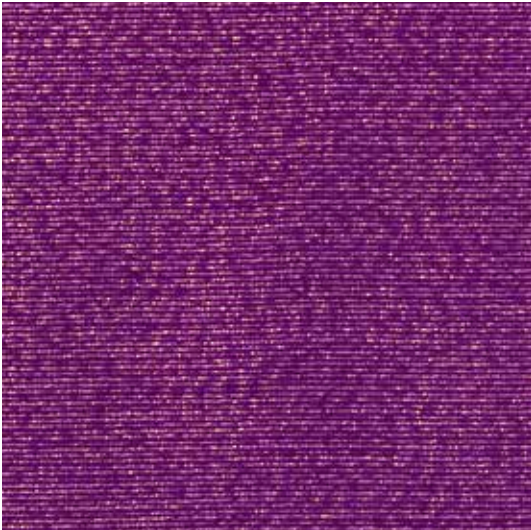
40 252 87.16  
Tessuto Papale mezza lana  
AC 64% WO 24% PL 12%



0096



0230



0317



0425

**43 010 23.16**  
Broccato croce floreale  
PL 65% AC 25% VI 10%



0096



0123



0260



0317



0367

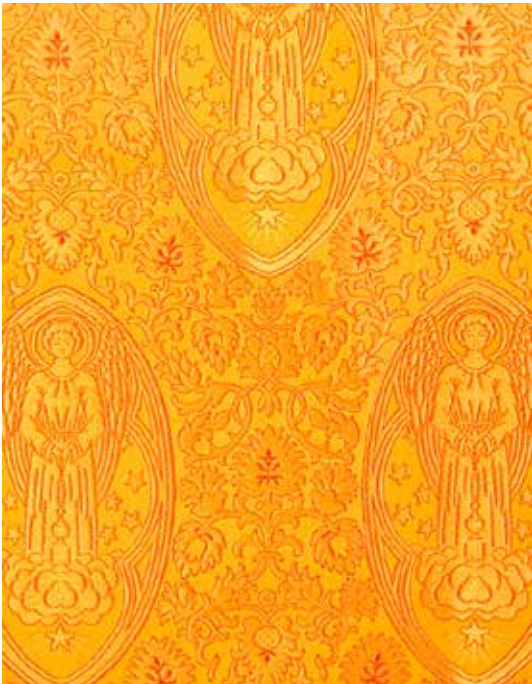


0424



0880

**43 014 23.16**  
Broccato angeli  
PL 65% AC 25% VI 10%



0260

**43 017 23.16**  
Broccato floreale  
PL 65% AC 25% VI 10%



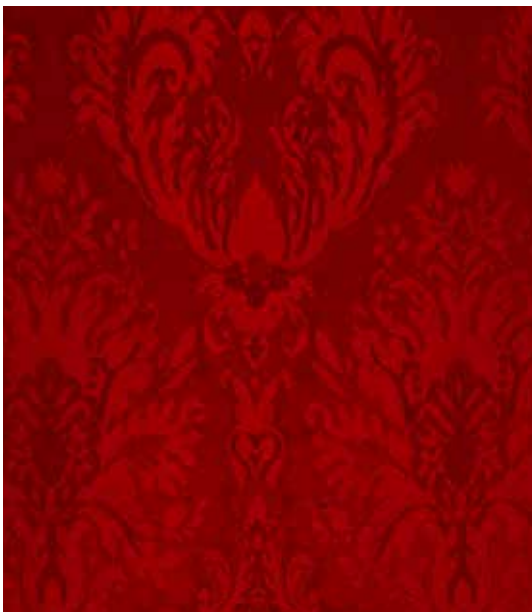
0096

**43 019 23.16**  
Broccato crocette argento  
PL 65% AC 25% VI 10%



2026

**43 020 20.16**  
Broccato S.Satiro grande tono su tono  
PL 55% AC 45%



1072



0424

**43 020 23.16**  
Broccato S.Satiro grande  
PL 65% AC 25% VI 10%



0096



0317



0424

**43 021 23.16**  
Broccato S.Satiro oro  
PL 65% AC 25% VI 10%



0096



0123



0260



0317



0367



0423



0424

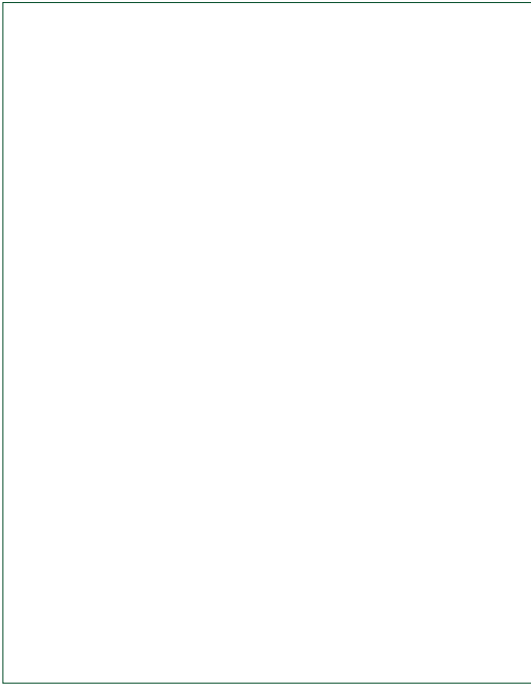


0848



0880

**43 022 23.16**  
 Broccato reale disegno grande  
 PL 65% AC 25% VI 10%



0096



0123



0260

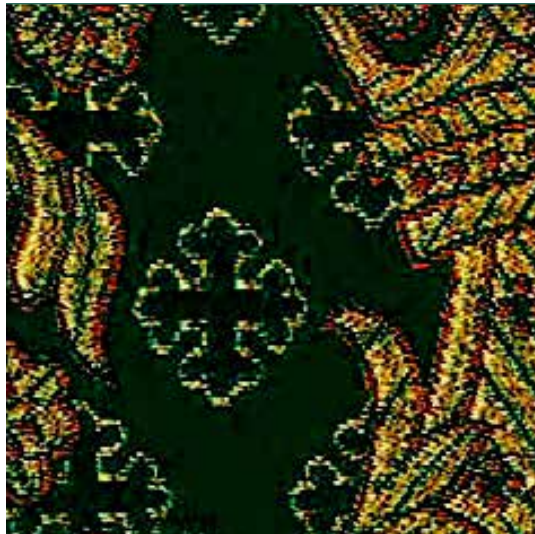
**43 023 23.16**  
 Broccato reale oro  
 PL 65% AC 25% VI 10%



0096



0317



0317



0424



0848



0855



1079



1150

**43 030 23.16**  
Broccato antico oro  
PL 65% AC 25% VI 10%



0096



0317



0367



0423



0424



1079

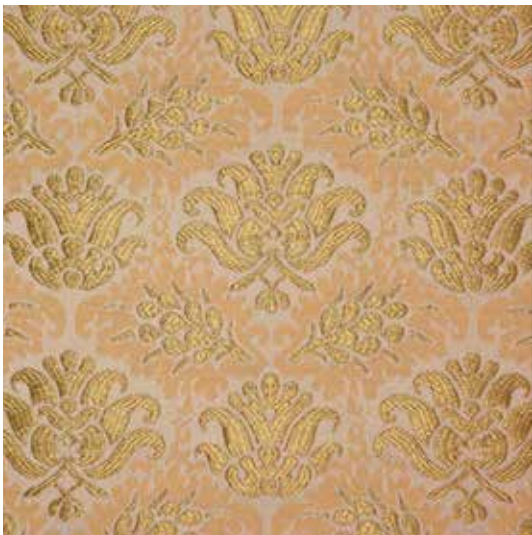
**43 030 25.16**  
Broccato antico oro  
PL 65% AC 25% VI 10%



0096

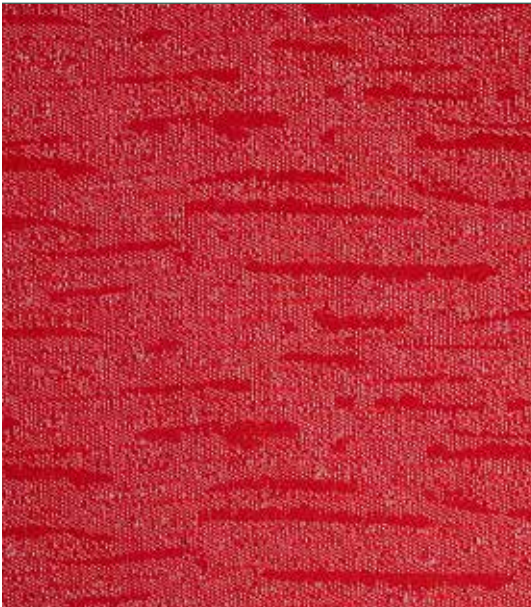


0424



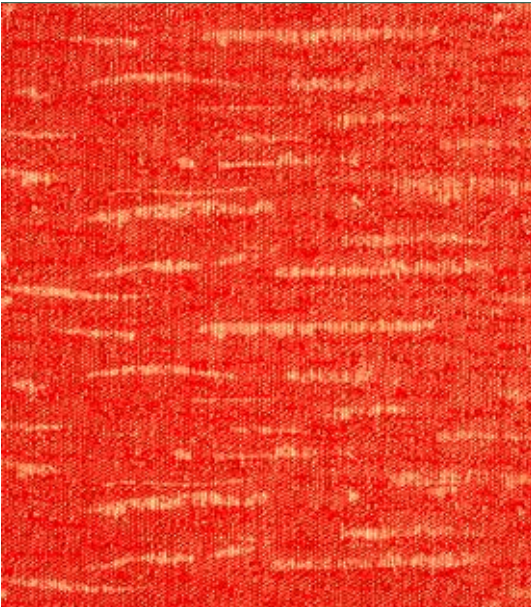
2026

**40 202 69.16**  
Sudario lurex argento  
WO 45% AC 40% PL 15%



0096

**40 202 79.16**  
Sudario lurex oro  
WO 45% AC 40% PL 15%



0096



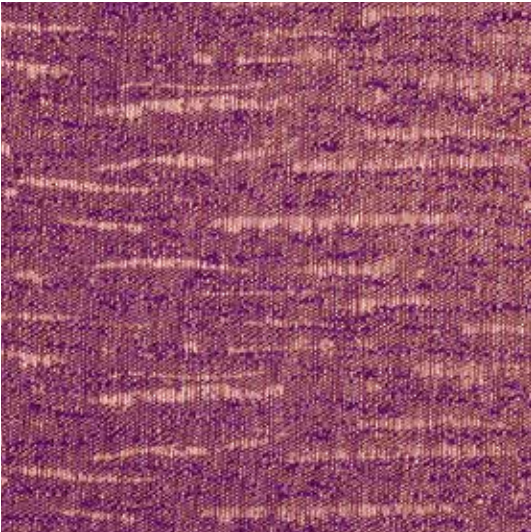
0317



0230



0401



0317



0401

42 008 80.16  
Damasco cerchio spighe  
AC 100%



0096



0260



0123



0317



0230



0401



0424



0230

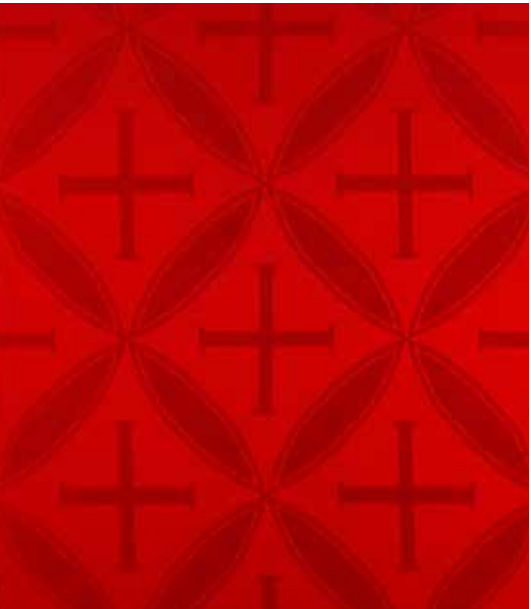


0424

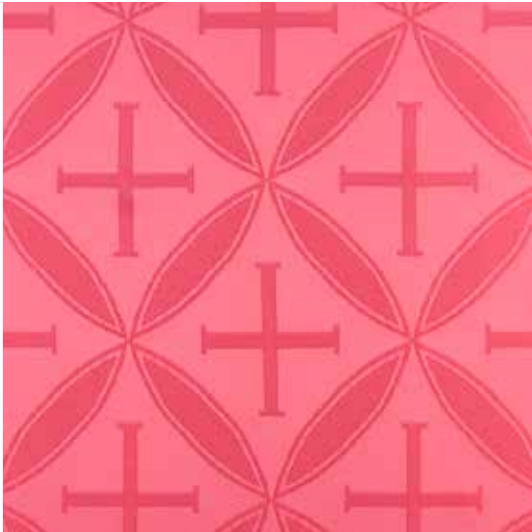


0317

42 010 80.16  
Damasco croce elisse  
AC 100%



0096

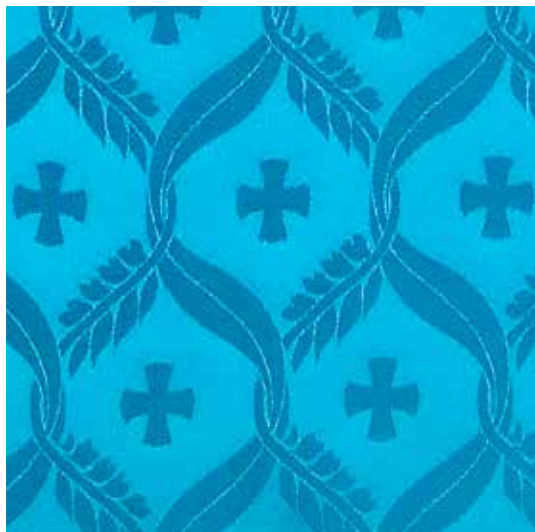


0317

**42 014 80.16**  
Damasco croce ulivo grano  
AC 100%



0096



0123



0230



0317



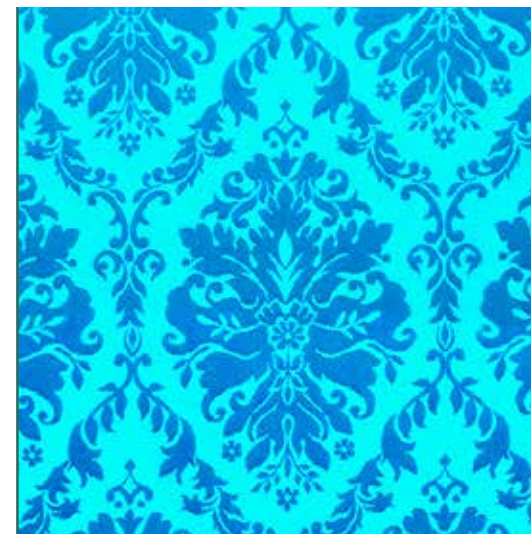
0401



0423



0848



0123

**42 031 80.16**  
Damasco San Satiro  
AC 100%



0094



0230



0096



0251



0260



0423



0317



0424

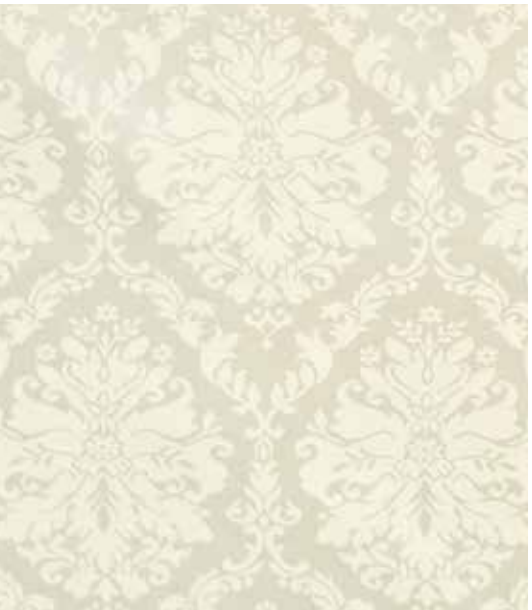


0401



0848

**42 031 84.16**  
Damasco misto seta San Satiro  
AC 70% SE 30%



0401

**42 041 80.16**  
Damasco campo crociato  
AC 100%

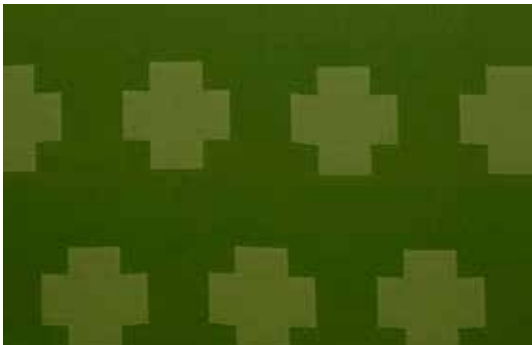


0096

**42 038 80.16**  
Damasco disegno fiorentino  
AC 100%



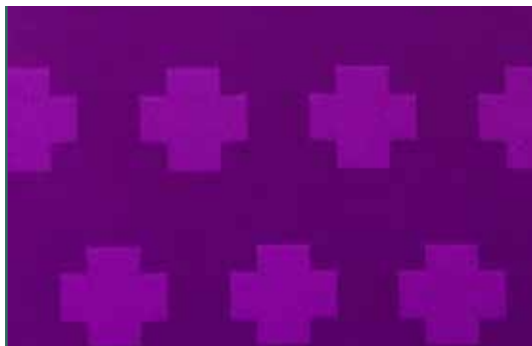
0251



0230



0317

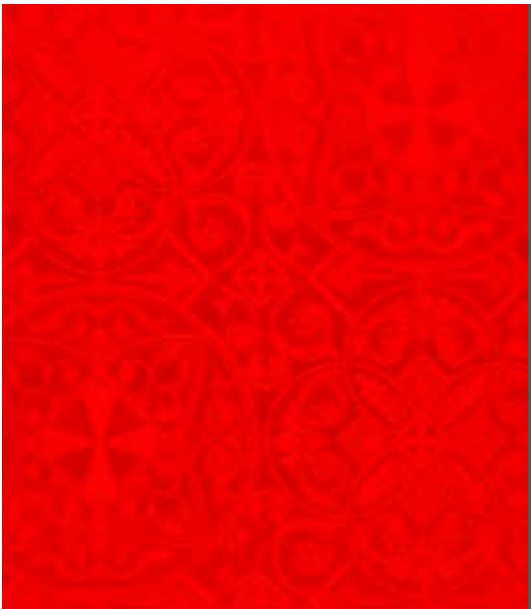


0317



0401

42 050 80.16  
Damasco Bisanzio  
AC 100%



0096



0401

42 100 80.16  
Damasco S. Satiro grande  
AC 100%



0096



0230



0317



0401

42 102 80.16  
Damasco floreale classico  
AC 100%



0251



0317

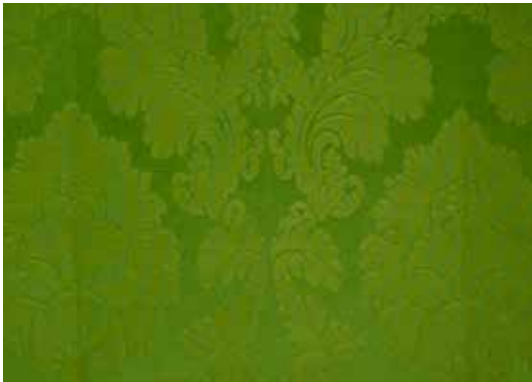
42 102 84.16  
Damasco misto seta floreale classico  
AC 70% SE 30%



0096



0401

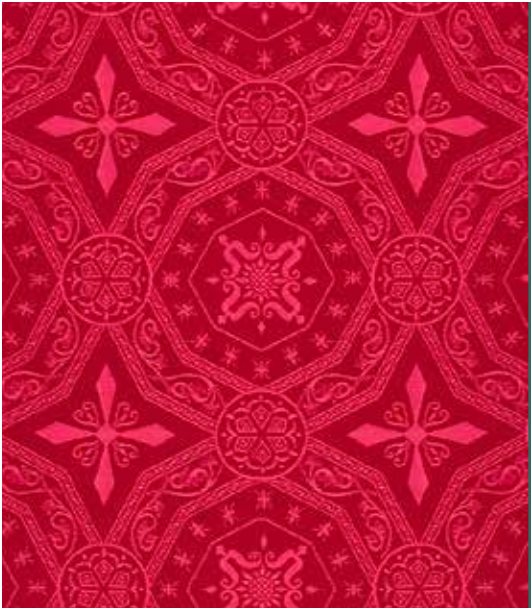


0230



1051

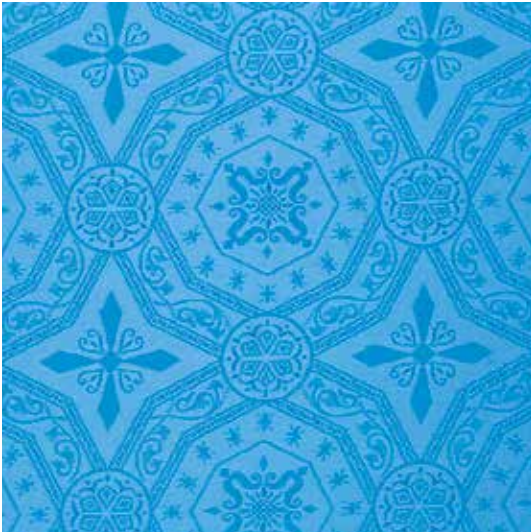
42 220 80.16  
Damasco croce stella  
AC 100%



0094



0096



0123



0230



0317



0401



0424



0848



0096

42 238 80.16  
Damasco ottagono  
AC 100%



0230



0317



0401

**42 240 13.16**  
Damasco filigranato capitello  
AC 66% VI 22% PL 12%



0096



0401

**42 241 13.16**  
Damasco sable filigranato capitello  
AC 66% VI 22% PL 12%



0230



0096



0317



0230



0401

**44 046 23.16**  
Tessuto saglia filato oro  
PL 75% VI 25%



1001

**44 058 87.16**  
Saglia per riporti oro  
PL 100%



1001

**44 046 23.16**  
Tessuto saglia filato argento  
PL 75% VI 25%



1002

**44 046 23.16**  
Saglia per riporti argento  
PL 100%



1002

**43 005 23.16**  
Drappo rombi  
PL 65% VI 35%



**43 009 23.16**  
Drappo angeli musicisti  
PL 65% VI 35%



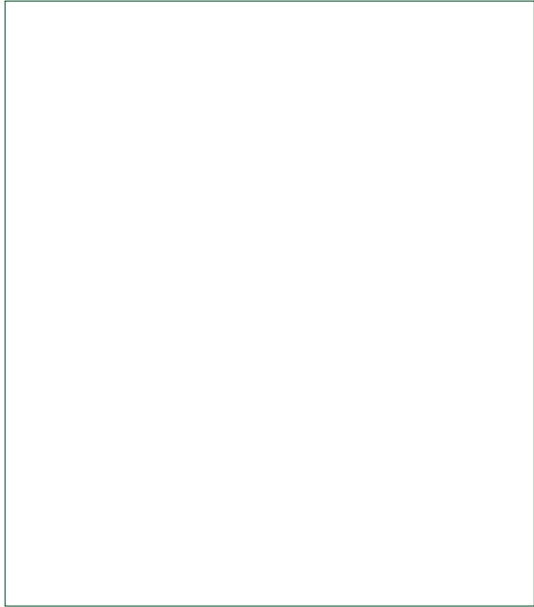
**43 006 04.16**  
Drappo floreale filato dorato  
PL 32% VI 29% MED 26% CO 13%



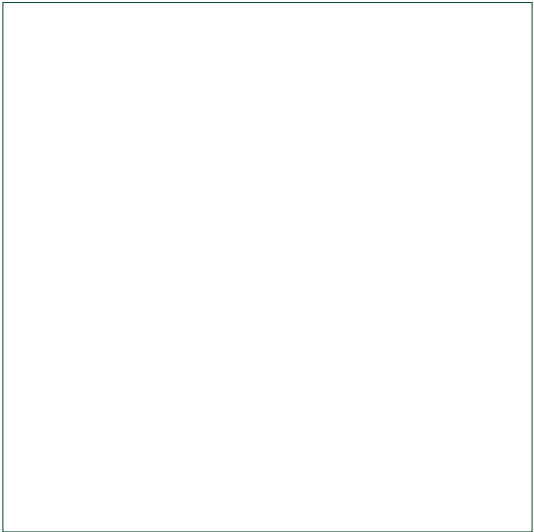
**43 040 23.16**  
Drappo croci rombi  
PL 65% VI 35%



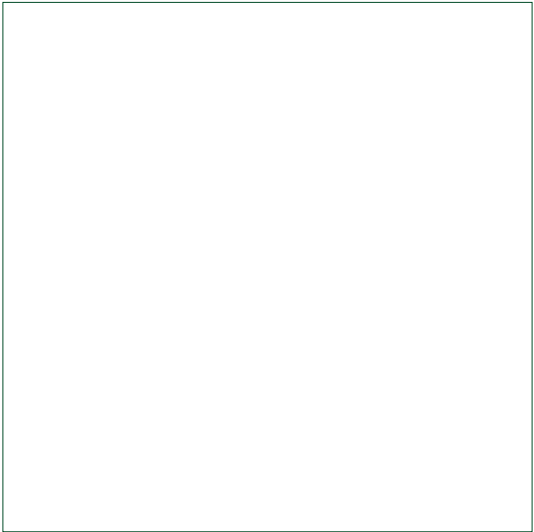
48 020 11.15  
Tessuto raso  
PL 100%



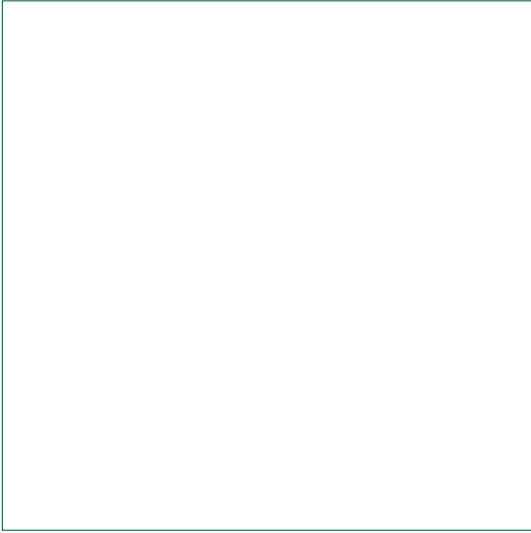
0096



0230



0317



0401

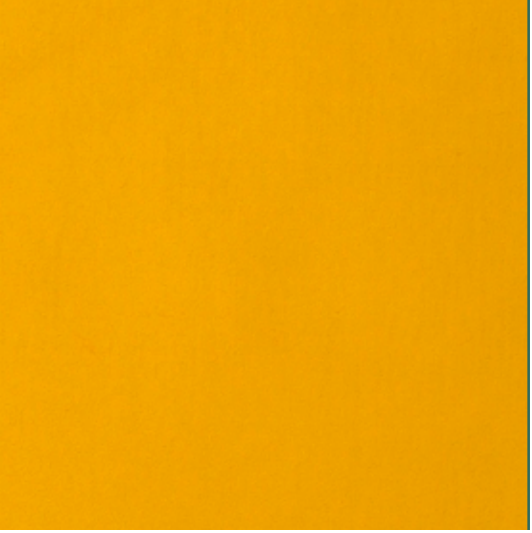
48 021 27.16  
Tessuto raso brillante  
PL 65% AC 35%



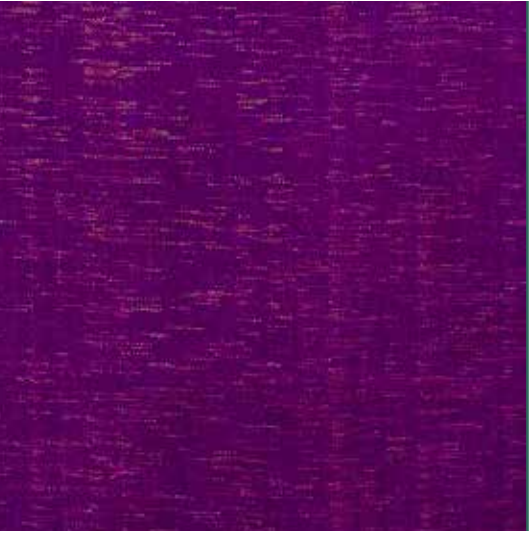
0096



0123



0260



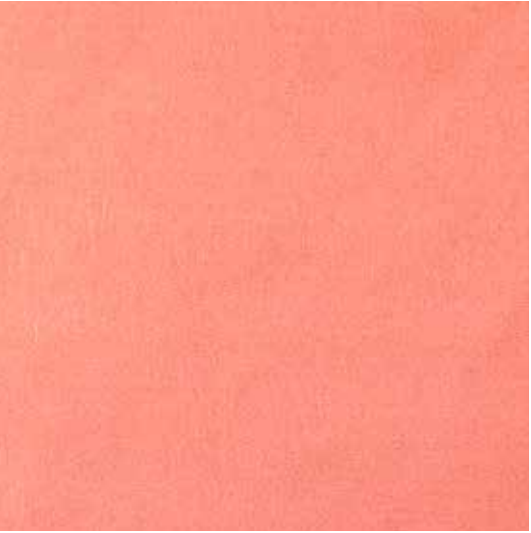
0317



0367



0424



0424

TESSUTI ECCLESIASTICI TESSUTO SETA		felisi <sup>1911</sup>		felisi <sup>1911</sup>		TESSUTI ECCLESIASTICI TESSUTO SETA	
	<div> <div>46 002 44.16</div> <div>Tessuto pura seta doppio twill tinto filo</div> <div>SE 100%</div> </div> <div>0096</div>		<div> <div>0305</div> </div>		<div> <div>0848</div> </div>		<div> <div>46 004 44.16</div> <div>Tessuto raso pura seta</div> <div>SE 100%</div> </div> <div>0401</div>
	<div> <div>0230</div> </div>		<div> <div>0317</div> </div>		<div> <div>46 003 44.16</div> <div>Tessuto raso pura seta</div> <div>SE 100%</div> </div> <div>0401</div>		
	<div> <div>0260</div> </div>		<div> <div>0367</div> </div>				